



Emma Norton

Emma Norton Legacy Circle Luncheon
November 7, 2024

Speakers

Shawna Nelsen-Wills
Advancement Director

Ann Girres
Board President

Anne Russell
Legacy Circle Member
& Past Board Chair



Legacy Committee Members

Elizabeth Everitt
Mary Gates
Sandy Craighead
Shirley Jackson
Judy Phillips
Virginia Vandervest

Emma Norton

Mission

We connect people to transformational housing, growth, and possibility—realized through their own design—in support of their journey of recovery.



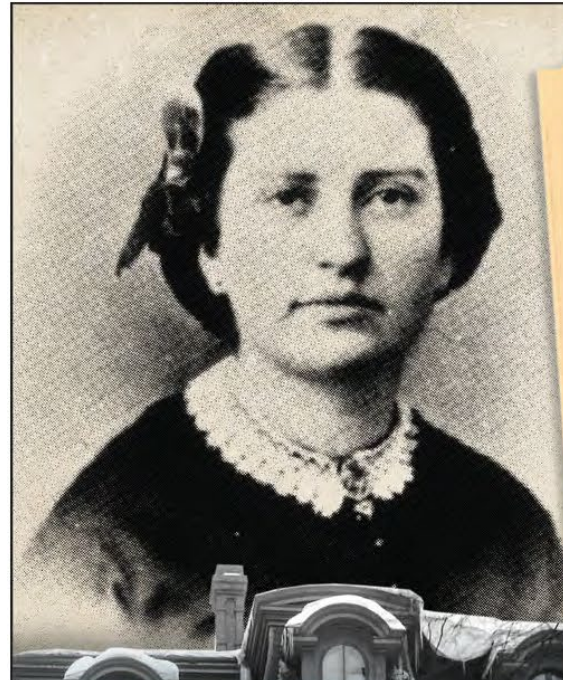
Vision

A trauma-informed organization that promotes healing and recovery through a full array of exemplary housing and services.

Values

Embracing Humanity
Cultivating Community
Sparking Creativity
Inspiring Joy

Celebrating Emma Norton's History



48 W MONDAY, MAY 13, 2002

LOCAL NEWS
FROM PAGE 1B

WWW.TWINCITIES.COM ■ ST. PAUL PIONEER PRESS

Additional supportive housing is planned

Targets: teens, single moms, large families

BY MAIA BECKSTROM
Pioneer Press

At its simplest, supportive housing pairs low-rent apartments with an array of services designed to help homeless families keep their housing, improve their lives, obtain better employment or manage disabilities. Beyond that, the variations are endless. Here are several projects in the pipeline:

JACKSON STREET VILLAGE

Jackson Street and Arlington Avenue, St. Paul. Plans were unveiled this week for a housing and research project in the North End neighborhood targeting homeless single mothers. The \$8.8 million project includes 20 units and a community building for after-school programs and on-site services provided by the Wilder Foundation.

The development will also test new technologies that improve energy efficiency and indoor air quality, using standards developed by the American Lung Association Health Home Program. An additional \$1 million from Xcel Energy and the Minneapolis Foundation will pay to make the buildings

air- and watertight and to install an innovative ground-source heat pump and an improved ventilation system. Wall sensors will monitor temperature, humidity and indoor pollutants, such as cigarette smoke and mold. University of Minnesota researchers will evaluate the data to determine whether these added measures result in better health for residents or cost savings.

"If we have people live in healthy housing, it reduces children's illnesses, and that may offset the extra costs of more intricate building techniques," said Dan Cain of RS Eden, the project's developer.

SEVENTH LANDING

1364 W. Seventh St., St. Paul. Growing Home, a nonprofit organization that works with children in foster care, will break ground June 27 on a housing program for young adults no longer eligible for services in the child welfare system, who often end up homeless. The \$2.9 million building, which will be built on the site of a vacant sandwich shop a block west of Victoria Street, will include 15 studio apartments. "It's an option for kids who

are not ready to go out there and be by themselves," said Michelle Chalmers, Growing Home youth development director. The young adults will be hooked up with social services, and in an unusual collaboration, the nearby Millard Pierce Cafe will expand into a downstairs storefront and offer job training to residents.

EMMA'S PLACE

2163 Van Dyke, Maplewood. A new 15-unit townhome complex run by Emma Norton Services is targeting homeless families with four or more children that find it next to impossible to rent apartments. The first residents move in this month. The mothers struggle with mental illness, chemical dependency or a physical disability.

The \$2.5 million development also includes a community building for two social workers, after-school programs and a computer lab. Residents must attend weekly chemical dependency support groups and either work or be in an educational or training program 20 hours a week. Each family also will be paired with a religious congregation that will help with everything from buying household supplies to celebrating children's birthdays. An original site, at Dale Street and Maryland Avenue, was

abandoned after neighbors turned down a request for a zoning variance.

HEARTH CONNECTION

Ramsey and Blue Earth counties. Under a \$6 million demonstration project funded by the Legislature, Hearth Connection places longtime homeless families in existing apartments in St. Paul and Mankato and links them with intensive services. An additional \$1.7 million from private foundations will pay for a first-of-its-kind evaluation to determine whether families are better off and whether the approach results in savings to public services. Researchers will look at residents' lives before and after moving into supportive housing and measure such factors as employment, school attendance, hospitalizations, and

single rooms for low-income adults with shared kitchens and baths. The mostly vacant four-story building now houses about 20 Catholic Charities volunteers. The St. Paul City Council narrowly approved the project this spring amid opposition from some neighbors. It could open as soon as January 2003.

On-site employment counselors will steer residents into jobs. St. Paul Technical College, which is across the street, will also make its training programs available to residents. The goal is to increase wages until residents can move into market-rate apartments.

Supportive housing

(continued)

least a dozen new supportive housing projects breaking ground or finishing construction over the next 18 months in the East Metro. They include plans recently unveiled for a combination housing and

services building at the intersection of Grand and Hennepin avenues, and a new development at the intersection of Grand and Hennepin avenues, and a new development at the intersection of Grand and Hennepin avenues.

The cities of Minneapolis and St. Paul listed supportive housing in their housing goals, with St. Paul aiming to double its existing slots by adding 600 additional units between 1999 and 2004. The state also recently

funded a demonstration to study the effectiveness of various approaches. And agencies and private groups have shown interest in funding such projects.

"We're seeing a lot of interest in supportive housing," said Mari Moon, of the Corporation for Supportive Housing, which pushes nationally and locally for more supportive housing. "But there are people on the streets who are sick and mentally ill who need ongoing supports to get their lives back on track."

The cities of Minneapolis and St. Paul listed supportive housing in their housing goals, with St. Paul aiming to double its existing slots by adding 600 additional units between 1999 and 2004. The state also recently

funded a demonstration to study the effectiveness of various approaches. And agencies and private groups have shown interest in funding such projects.

"We're seeing a lot of interest in supportive housing," said Mari Moon, of the Corporation for Supportive Housing, which pushes nationally and locally for more supportive housing. "But there are people on the streets who are sick and mentally ill who need ongoing supports to get their lives back on track."

those coming from Crestview tenants involved in the Neighborhood Watch program.

"It's a real problem," said Rosi Walker, community organizer for the Payne Phelan Planning Council. "It's a lot quieter now, to be honest. They have a stake in the community."

The program takes women mostly from treatment programs, but also from jails, shelters and straight off the street. Four in five women are unemployed when they move in.

The program takes women mostly from treatment programs, but also from jails, shelters and straight off the street. Four in five women are unemployed when they move in.

The program takes women mostly from treatment programs, but also from jails, shelters and straight off the street. Four in five women are unemployed when they move in.

The program takes women mostly from treatment programs, but also from jails, shelters and straight off the street. Four in five women are unemployed when they move in.

The program takes women mostly from treatment programs, but also from jails, shelters and straight off the street. Four in five women are unemployed when they move in.

The cities of Minneapolis and St. Paul listed supportive housing in their housing goals, with St. Paul aiming to double its existing slots by adding 600 additional units between 1999 and 2004. The state also recently

funded a demonstration to study the effectiveness of various approaches. And agencies and private groups have shown interest in funding such projects.

"We're seeing a lot of interest in supportive housing," said Mari Moon, of the Corporation for Supportive Housing, which pushes nationally and locally for more supportive housing. "But there are people on the streets who are sick and mentally ill who need ongoing supports to get their lives back on track."

The cities of Minneapolis and St. Paul listed supportive housing in their housing goals, with St. Paul aiming to double its existing slots by adding 600 additional units between 1999 and 2004. The state also recently

funded a demonstration to study the effectiveness of various approaches. And agencies and private groups have shown interest in funding such projects.

"We're seeing a lot of interest in supportive housing," said Mari Moon, of the Corporation for Supportive Housing, which pushes nationally and locally for more supportive housing. "But there are people on the streets who are sick and mentally ill who need ongoing supports to get their lives back on track."

The cities of Minneapolis and St. Paul listed supportive housing in their housing goals, with St. Paul aiming to double its existing slots by adding 600 additional units between 1999 and 2004. The state also recently



1917 - The Methodist Home for Girls is founded with a gift from Mrs. Emma Norton to the United Methodist Women (UMW). The home became a National Mission Institute and provided safe, affordable housing to women coming to the Twin Cities for work or school.

1967 - Emma Norton Residence opens in downtown Saint Paul on Robert Street North, with dormitory-style housing for up to 50 women. Over the next two decades, ENR houses a variety of populations, including deaf students, women working downtown or at the State Capitol, families with loved ones in long-term care at Regions Hospital, and more.

1990s and 2000s - With homelessness on the rise, Emma Norton Residence becomes a critical shelter space. Later, the program added case management services, focusing on offering longer-term housing and specializing in supporting women with mental health and substance use challenges.

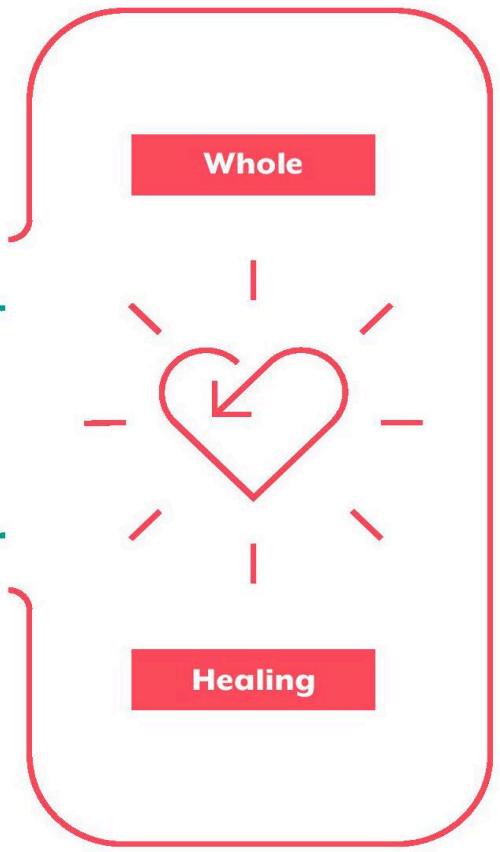
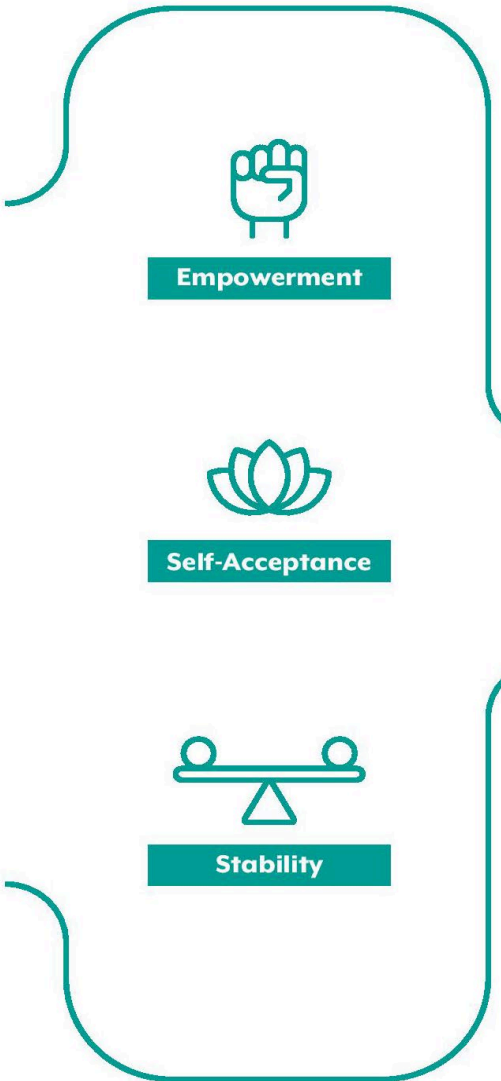
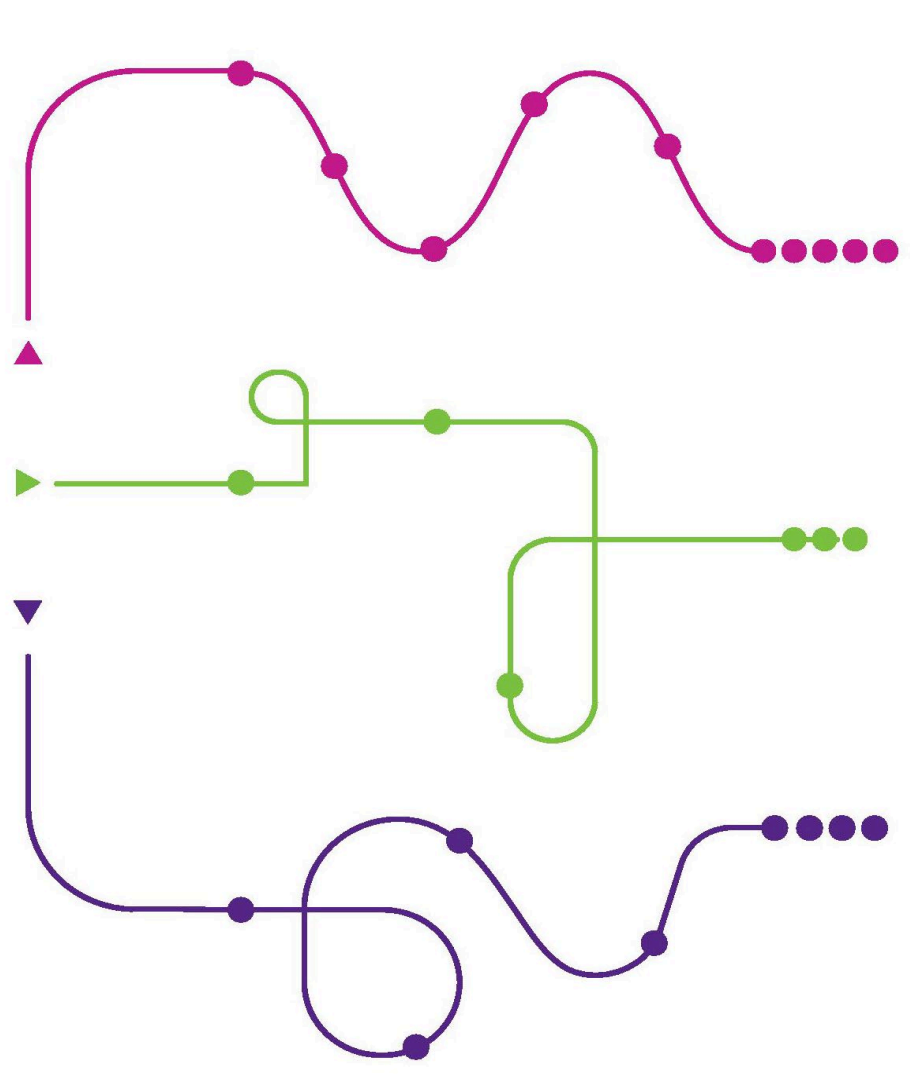
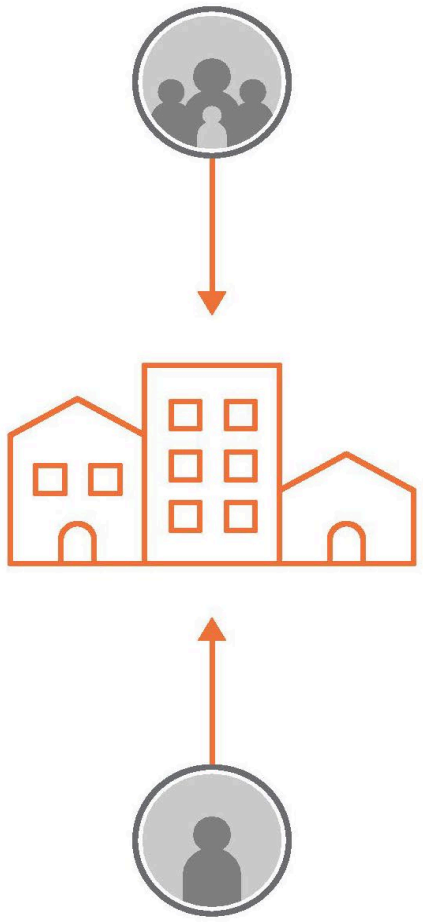
2002 - Emma's Place in Maplewood opens to provide supportive housing for large families experiencing homelessness, helping fulfill an unmet community need. The project included 13 townhomes, a community building, and a playground.

2015 to 2020 - Emma Norton implements evidence-based practices, such as Housing First, Harm Reduction, the Sanctuary Model, and Social Emotional Learning. The organization continues to expand its services with the addition of Peer Support Specialists and the Scattered-Site Housing Program, and an Emma's Place renovation.

2022 to 2024 - Construction begins on a new innovative trauma-informed architectural building, Restoring Waters, in Highland Bridge. It opened in April 2024 with 60 apartments for individual adults and small families as well as the new organizational headquarters.



Emma Norton



All are welcome.

We advocate for each client to achieve their unique goals.

A supported journey results in a stronger self.

Dignity creates transformation.



Housing Programs

In 2023, Emma Norton served more than 300 individuals and children throughout our programs.

Restoring Waters (Opened April 2024)

- 56 alcove and 4 one-bedroom supportive housing units for individuals and small families in the Highland neighborhood of St. Paul

Emma's Place

- 13 townhomes and a community center for families with 3 or more children

Scattered-Site Housing

- Independent living in privately owned apartments across the Twin Cities

Our Impact



Each year, Emma Norton Services supports over 300 individuals and families on their journey to wellness, self-sufficiency, and stability. In 2023:

Over 90 youth engaged in activities and programming at Emma's Place.

100% of Scattered-Site clients received housing stability support to help resolve a crisis.

92% of Scattered-Site clients successfully completed their initial lease period upon moving into their own rental units.

95% of residents worked with their case manager to complete a Stability Plan and complete at least one goal before exiting Emma Norton Residence (*closed April 2024*)

Trauma-informed Care



Research Collaborative

Emphasizes four main areas:

1. **Realization** – understand the widespread impact of trauma and understand that people have developed coping mechanisms to deal with trauma and survival;
2. **Recognition** – knowing when we see the signs and symptoms of trauma in clients, families, staff and others involved with the system
3. **Responding** - by fully integrating knowledge about trauma into policies, procedures, and practices
4. **Resisting** - Seeks to actively resist re-traumatization and focuses on healing and recovery.

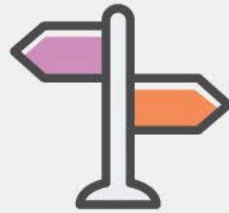
These are the guiding principles in everything we do!

Restoring Waters is being designed with trauma-informed principles to create a welcoming environment that acknowledges and addresses ongoing racial trauma and promotes a sense of calm, safety, dignity, empowerment, and well-being for all.



Collaboration & Mutuality

Importance is placed on partnering and the leveling of power—everyone has a role to play in a trauma-informed approach.



Empowerment & Choice

Individuals' strengths and experiences are recognized and built upon; clients are supported in shared decision-making, choice, and goal setting.



Cultural & Gender

Eliminate cultural and gender stereotypes and biases; incorporate responsive policies and protocols to the needs of all individuals served.



Safety

Promote a sense physical and psychologically safety throughout the space.



Trust & Transparency

Operations and decisions are conducted with transparency to build and maintain trust.



Peer Support

Peer support or trauma survivors offer lived experience to promote recovery and healing.



Living Room Model

Restoring Waters is home to The Living Room. In this space, people over the age of 18 experiencing a mental health crisis can see Peer Support Specialists on a walk-in basis, at no cost. This service opened in August 2024, and expanded hours to 7 days a week, 12-8 PM in October. According to SAMHSA and the American Psychiatric Association, Living Room visits simultaneously provide better outcomes and cost-savings when compared to emergency department visits for mental health crises.



CAMPAIGN GOAL
\$3.75 MILLION

Create and Expand

TRANSFORMATIVE HOUSING = \$2.75M

Foster Recovery Through

LIFE CHANGING SUPPORT = \$650K

Build Stability and Flexibility

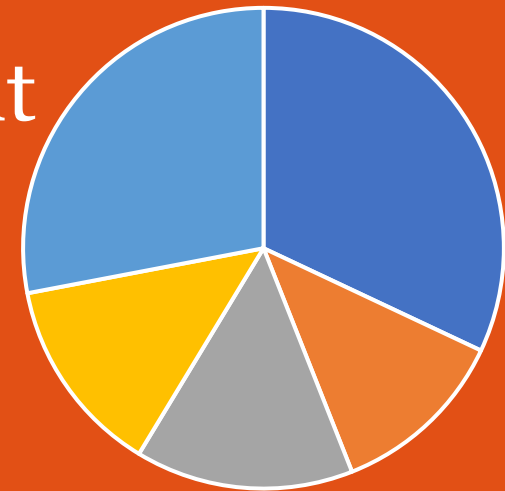
FOR THE FUTURE = \$350K



ACTING for JUSTICE and EQUITY BOLDLY

\$3.4 million+ raised or pledged to date:

- \$1.7 million from foundations/government
- \$570,000+ from individual donors
- \$630,000+ from Faith Campaign
- \$500,000 from sale of building
- **\$350,000 left to raise!**



Get involved! In-kind donations

HOME+

HEALING

- Cleaning Supplies
- Small appliances
- Holiday gift drives



Get involved! Volunteering

HOME+

HEALING

- Birthday Bingo
- Cooking classes
- Holiday events
- Art classes
- Gardening
- And more!



Year End Giving

- \$10,000 Give to the Max Match from an anonymous donor
- \$10,000 Board Match for Capital Campaign
- Gift cards for residents for holidays



Save the Date: Opening Doors Gala April 24, 2025



Leave your legacy

Join Emma's Legacy Circle Today!



How to plan a legacy gift

Name Emma Norton as a beneficiary in your ...

- Will or Living Trust
- IRA, pension, 401(k), 403(b) or other retirement accounts
- Life Insurance Policy
- Charitable Remainder Trust (CRT)

* Make an early or partial Legacy Gift to Emma Norton now. *

Talk with your financial adviser on what works best for you!

Your Impact



Your support is key to helping provide transformational housing in our community!

Welcome Ann Girres!



Emma Norton

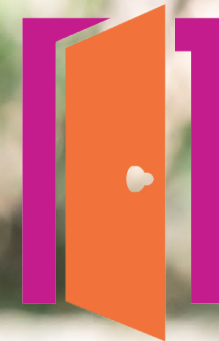
The Journey Home Begins Here

Welcome Anne Russell!



Emma Norton

The Journey Home Begins Here



Emma Norton

The Journey Home Begins Here

